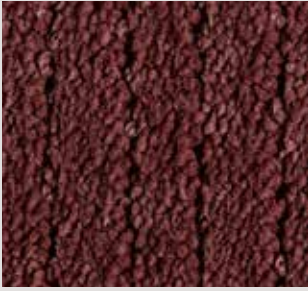
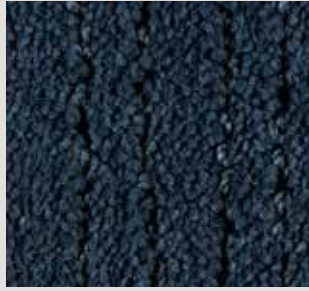


# Loft Life Pure

FOREVER CLEAN™



▲ SB: LUU1.0180 | 400 cm



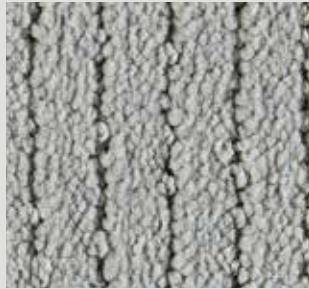
▲ SB: LUU1.0780 | 400 cm



▲ SB: LUU1.0880 | 400 cm



▲ SB: LUU1.0080 | 400 cm



▲ SB: LUU1.0870 | 400 cm



▲ SB: LUU1.0170 | 400 cm



▲ SB: LUU1.0840 | 400 cm



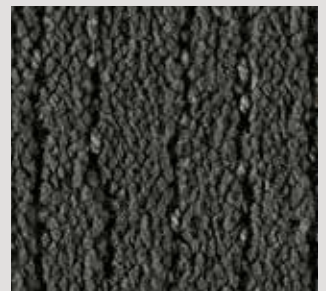
▲ SB: LUU1.0440 | 400 cm



▲ SB: LUU1.0430 | 400 cm



▲ SB: LUU1.0260 | 400 cm



▲ SB: LUU1.0810 | 400 cm



▲ SB: LUU1.0410 | 400 cm

# LOFT LIFE

# Loft Life Pure

FOREVER CLEAN™

|  |   |
|--|---|
| <b>Secondary Backing</b><br>Rugtype • Envers<br>Rücken • Sottofondo  | <b>SB</b>   |
| <b>Manufacturing process</b><br>Fabricagemethode • Technique de fabrication<br>Herstellungsart • Tecnica di fabbricazione                          | <b>1/10" Cut Loop</b>   |
| <b>Pile composition</b><br>Poolsamenstelling • Nature du velours<br>Polmaterial • Composizione felpa   | <b>TRIEXTA<br/>SMARTSTRAND</b>                                  |
| <b>Primary backing</b><br>Tuftdoek • Premier dossier<br>Trägermaterial • Tela di supporto  | <b>non woven</b>  |
| <b>Width</b><br>Breedte • Largeur<br>Breite • Altezza  | <b>± 400 cm</b>   |
| <b>Effective pile height</b><br>Nuttige poolhoogte • Hauteur de velours utile<br>Tatsächliche Florhöhe • Spessore felpa utile                      | <b>± 6 mm</b>   |
| <b>Total height</b><br>Totale dikte • Hauteur totale<br>Gesamthöhe • Spessore totale   | <b>± 8 mm</b>   |
| <b>Number of knots/sqm</b><br>Aantal noppen/m <sup>2</sup> • Nombre de points/m <sup>2</sup><br>Noppenzahl/m <sup>2</sup> • Numero di punti/mq     | <b>± 236.400</b>  |
| <b>Pile weight/sqm</b><br>Poolinzetgewicht/m <sup>2</sup> • Poids mis en oeuvre/m <sup>2</sup><br>Poleinsatzgewicht/m <sup>2</sup> • Peso felpa/mq | <b>± 1.280 gr</b>   |
| <b>Total weight/sqm</b><br>Totaal gewicht/m <sup>2</sup> • Poids total/m <sup>2</sup><br>Gesamtwegicht/m <sup>2</sup> • Peso totale/m <sup>2</sup> | <b>± 2.250 gr</b>   |
| <b>EN 13501-1 Fire behaviour</b><br>Brandgedrag • Comportement au feu<br>Brennverhalten • Reazione al fuoco  | <b>C<sub>fl</sub>-s1</b>  |
| <b>EN 1307-2004 Classification</b><br>Classificatie • Classification<br>Classifizierung • Classificazione  | <b>Class 23 + 31<br/>Domestic Heavy<br/>Commercial Moderate</b> |

|  |                                |
|--|--------------------------------|
| <b>ISO 140/8 1997 Impact sound insulation</b><br>Contactgeluidsisolatie • Isolation aux bruits d'impact<br>Trittschallverbesserungsmaß • Miglioramento acustico  | <b>± 25 dB</b>                 |
| <b>DIN 52612 Thermal retention</b><br>Warmteoorlaatweerstand • Résistivité thermique<br>Wärmedurchlaßwiderstand • Resistenza termica   | <b>± 0,09 m<sup>2</sup>/kW</b> |
| <b>TOG rating</b>  | <b>± 0,9</b>                   |
| <b>ISO 6356 2000 Teil 2: Permanently antistatic</b><br>Permanent antistatisch • Antistatique permanent<br>Permanent antistatisch • Antistatico permanente • Antiestático permanente                      | <b>&lt; 2 kV</b>               |
| <b>ISO 105 B02 2000 Lightfastness</b><br>Lichtechtheid • Solidité à la lumière<br>Lichtechtheit • Solidità colori alla luce  | <b>≥ 5</b>                     |
| <b>ISO 105 E01 2002 Waterfastness change in colour</b><br>Waterechtheid verkleuring • Solidité à l'eau changement couleur<br>Wasserechtheit Änderung der Farbe • Solidità colori all'acqua cambio colore | <b>≥ 3-4</b>                   |
| <b>ISO 105 E01 2002 Waterfastness staining</b><br>Waterechtheid uitbloeding • Solidité à l'eau dégorgeement<br>Wasserechtheit anbluten • Solidità colori all'acqua sfumatura colore                      | <b>≥ 2-3</b>                   |
| <b>ISO 105 X12 2001 Rubbingfastness dry</b><br>Wrijfchtheid droog • Solidité au frottement sec<br>Reibungechtheit trocken • Solidità colori allo sfregamento a secco                                     | <b>≥ 3-4</b>                   |
| <b>ISO 105 X12 2001 Rubbingfastness wet</b><br>Wrijfchtheid nat • Solidité au frottement humide<br>Reibungechtheit nass • Solidità colori allo sfregamento umido   | <b>≥ 3</b>                     |

(±) These details are approximate. Complete specification details and associated certificates together with tolerances applying to the above can be provided upon request. We reserve the right to improve technical specifications without prior notice. Due to method of manufacture perfect pattern and/or colour matching cannot be guaranteed. In cut-pile carpeting, in rare cases, shading pile reversal may occur without affecting its fitness for use. Shading/pile reversal can not be considered as a manufacturing or a material defect and will not affect the durability of the carpet. For other languages see: [www.lano.com](http://www.lano.com)

