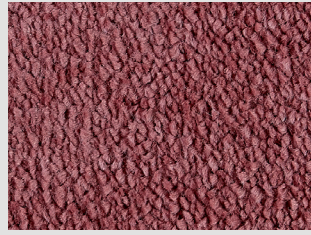




▲ SB: LUSO.0060 | 400 & 500 cm



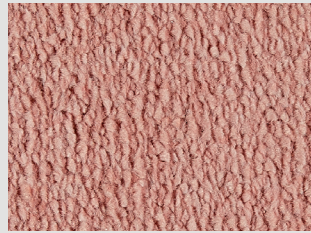
▲ SB: LUSO.0120 | 400 & 500 cm



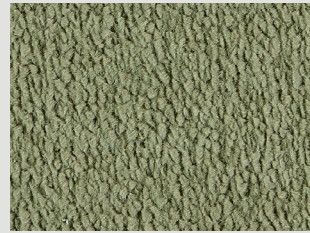
▲ SB: LUSO.0610 | 400 & 500 cm



▲ SB: LUSO.0380 | 400 & 500 cm



▲ SB: LUSO.0160 | 400 & 500 cm



▲ SB: LUSO.0480 | 400 & 500 cm



▲ SB: LUSO.0210 | 400 & 500 cm



▲ SB: LUSO.0860 | 400 & 500 cm



▲ SB: LUSO.0250 | 400 & 500 cm



▲ SB: LUSO.0260 | 400 & 500 cm



▲ SB: LUSO.0720 | 400 & 500 cm



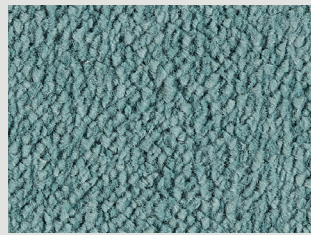
▲ SB: LUSO.0150 | 400 & 500 cm



▲ SB: LUSO.0240 | 400 & 500 cm



▲ SB: LUSO.0770 | 400 & 500 cm



▲ SB: LUSO.0740 | 400 & 500 cm



▲ SB: LUSO.0880 | 400 & 500 cm



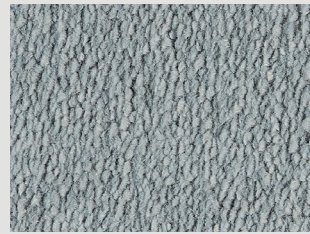
▲ SB: LUSO.0890 | 400 & 500 cm



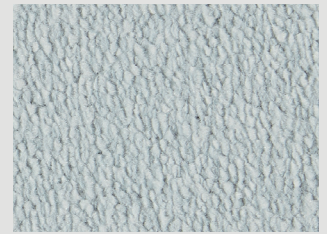
▲ SB: LUSO.0810 | 400 & 500 cm



▲ SB: LUSO.0820 | 400 & 500 cm



▲ SB: LUSO.0840 | 400 & 500 cm



▲ SB: LUSO.0870 | 400 & 500 cm

Secondary Backing Rugtype • Envers Rücken • Sottofondo • Reverse	SB
Manufacturing process Fabricagemethode • Technique de fabrication Herstellingsart • Tecnica di fabbricazione • Técnica de fabricación	tufted, 5/64" TWIST
Pile composition Pool Samenstelling • Nature du velours Polmaterial • Composizione felpa • Composición de pelo	100% TRIEXTA SMARTSTRAND
Primary backing Tuftdoek • Premier dossier Trägermaterial • Tela di supporto • Tela de soporte	woven synthetic secondary backing
Width Breedte • Largeur Breite • Altezza • Ancho	± 400 & 500 cm
Effective pile height Nuttige poolhoogte • Hauteur de velours utile Tatsächliche Florhöhe • Spessore felpa utile • Altura de pelo	± 7 mm
Total height Totale dikte • Hauteur totale Gesamthöhe • Spessore totale • Altura total	± 9 mm
Number of knots/sqm Aantal noppen/m ² • Nombre de points/m ² Noppenzahl/m ² • Numero di punti/mq • Puntos de pelo/m ²	± 257.040
Pile weight/sqm Poolinzetgewicht/m ² • Poids mis en oeuvre/m ² Poleinsatzgewicht/m ² • Peso felpa/mq • Peso de pelo/m ²	± 1.410 gr
Total weight/sqm Totaal gewicht/m ² • Poids total/m ² Gesamtwicht/m ² • Peso totale/m ² • Peso total/m ²	± 2.380 gr
EN 13501-1 Fire behaviour Brandgedrag • Comportement au feu Brennverhalten • Reazione al fuoco • Resistencia al fuego	C_{fl}-s1
EN 1307-2004 Classification Classificatie • Classification Klassifizierung • Classificazione • Clasificación al uso	Class 23 + 31 Domestic Heavy Commercial Moderate

ISO 140/8 1997 Impact sound insulation Contactgeluidsisolatie • Isolation aux bruits d'impact Trittschallverbesserungsmaß • Miglioramento acustico	± 25 dB
DIN 52612 Thermal retention Warmteoorlaatweerstand • Résistivité thermique Wärmedurchlaßwiderstand • Resistenza termica	± 0,1m²/kW
TOG rating	± 1
ISO 6356 2000 Teil 2: Permanently antistatic Permanent antistatisch • Antistatique permanent Permanent antistatisch • Antistatico permanente • Antiestático permanente	< 2 kV
ISO 105 B02 2000 Lightfastness Lichtechtheid • Solidité à la lumière Lichtechtheit • Solidità colori alla luce	≥ 5
ISO 105 E01 2002 Waterfastness change in colour Waterechtheid verkleuring • Solidité à l'eau changement couleur Wasserechtheit Änderung der Farbe • Solidità colori all'acqua cambio colore	≥ 3-4
ISO 105 E01 2002 Waterfastness staining Waterechtheid uitbloeding • Solidité à l'eau dégorgeement Wasserechtheit anbluten • Solidità colori all'acqua sfumatura colore	≥ 2-3
ISO 105 X12 2001 Rubbingfastness dry Wrijftechtheid droog • Solidité au frottement sec Reibungechtheit trocken • Solidità colori allo sfregamento a secco	≥ 3-4
ISO 105 X12 2001 Rubbingfastness wet Wrijftechtheid nat • Solidité au frottement humide Reibungechtheit nass • Solidità colori allo sfregamento umido	≥ 3

(±) These details are approximate. Complete specification details and associated certificates together with tolerances applying to the above can be provided upon request. We reserve the right to improve technical specifications without prior notice. Due to method of manufacture perfect pattern and/or colour matching cannot be guaranteed. In cut-pile carpeting, in rare cases, shading pile reversal may occur without affecting its fitness for use. Shading/pile reversal can not be considered as a manufacturing or a material defect and will not affect the durability of the carpet. For other languages see: www.lano.com

